

# Weekly Newsletter

2nd May 2025

Gosford Park Primary School

Tel: 024 76223281

Email: [enquiries@gosfordpark.coventry.sch.uk](mailto:enquiries@gosfordpark.coventry.sch.uk)



**SCHOOL IS CLOSED ON MONDAY– IT IS A BANK HOLIDAY!**



Year 5 and 6 took part in a STEM (Science, Technology, Engineering and Mathematics) experience on Wednesday. They designed, built and tested an air powered K'Nex car. Our children were able to see how STEM is a theme in all the technology we use, activities we do and the jobs available to us. They loved the experience! Thank you to Mrs Miles (Year 4) and Mrs Lee, (Year 1) our Science co-ordinators, for organising such a memorable event!

## Timetable Rockstars

This week's winners are:  
4 Sherbourne (10 Dojos each!)

## This Week's Attendance:

1st: Baginton 98.08% (5 Dojos each)  
2nd: Phoenix 98% (3 Dojos each)  
3rd: Coffantre 96% (1 Dojo each)

**Wow! Close between first and second this week!**

## Dinner Time Discussions

How can we protect ourselves from the sun?  
(We talked about this in our OPAL assembly this week)

## Housepoints

East house win for this week

### Attendance

It is always important that children attend school. This is particularly important during statutory assessment weeks for your child's mental health and wellbeing- for the SATs, if a child is absent they need to be separated from the year group until they have completed all of the tests they have missed. This is distressing for them, and would also mean removal of phones and devices too to ensure they had no contact.

It is crucial Year 6 attend school every day of the week beginning May 12th.

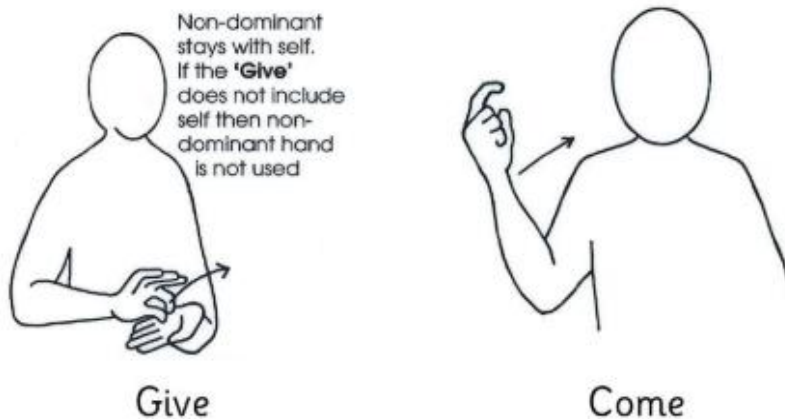
It is crucial that Year 4 attend school every day of the week beginning June 3rd (June 2nd the school is closed).

It is crucial that Year 1 attend school every day of the 2 weeks beginning 9th June and 16th June.

The best way for your child to learn is to be in school, on time, all day, everyday and we really appreciate your support in this matter.

***Everyone. Everyday.***

## **Makaton Sign of the Week**



16

### Celebrations Outside of School

If you have photographs or information about your child's achievements outside of school please send them to

[enquiries@gosfordpark.coventry.sch.uk](mailto:enquiries@gosfordpark.coventry.sch.uk)

## A Message for Year 6 Families

This half term the children have started to use Learning by Questions. This is an online tool that supports teaching them to their gaps in understanding across reading, maths and grammar and punctuation. It is as effective as a personal AI tutor!

The children enjoy using it in school and we are asking that they spend as much time as possible on their independent study.

After half term, this is the weekly plan for all children in Year 6:

### **Week 1– Completed!**

**Week 2-** (Monday 5th May– School closed) Tuesday 6th– Friday 9th May: Year 6 children invited in to school from 8am to a booster session every morning on learning by questions. They should come through the front office.

On Tuesday 6th, if your child is signed up to go on the residential, then there is a parent/ carer meeting about this.

**Week 3–** SATS week– Monday 12th May– Thursday 15th May: Year 6 children invited in to school from 8am to have a SATs breakfast. All children must be in school on these dates.

Friday 16th May: As long as all children are in school for Week 3 then this will mark the end of SATS week. A non uniform day for Year 6 children only will be confirmed on Thursday 15th by 3:15pm.

**Week 4–** School returns to normal time. 8:30am classroom doors. We will still be doing our writing lessons and we will be blocking full afternoons of our foundation subjects.

### A PARENT'S GUIDE TO LEARNING BY QUESTIONS

Good news! Your school has invested in the award-winning Learning by Questions (LbQ).

But what is LbQ, and how can it help your children?

**What is LbQ?**  
Learning by Questions is a teaching and learning tool filled with Question Sets for maths, English and science. Pupils answer questions on a device, whether that be at home or in the classroom, and the teacher can see how they are doing in real time.

**"What I like is that when you get a question wrong a couple of times and you are struggling on it, your teacher knows straight away and they can come and help you."**  
Caitlin, aged 10

**How does it help your child?**  
**Immediate and constructive feedback**  
Every time your child answers a question they are given immediate and constructive feedback, which means you don't have to remember those tricky percentages and decimals!

**No learner left behind**  
As children progress through activities, LbQ tailors questions at a pace suited to them. No one gets left behind and everyone works at the speed and challenge that's right for them.

**"I found it really good because I can learn at my own speed and I don't have to wait for others and others don't have to wait for me, so I feel OK going at my own pace."**  
Jack, aged 12

**How does LbQ help your teacher?**  
Teachers can see who needs help and why, and focus their efforts on the areas that need the most attention. Our automatic marking feature frees up bags of teaching and planning time so they can continue to do what they do best: teach your children!

**Impact!**  
LbQ has been proven to improve exam results and boost pupil confidence. Just take a look at our impact on **Masefield Primary School in Bolton** to see the effect that we can have on pupils and teachers.

**LbQ Remote Learning**  
Using LbQ remotely couldn't be easier. Our digital resources mean that there is no printing out worksheets or marking work yourself.

**LbQ eases the burden of remote learning**  
Helpful feedback is delivered automatically and the teacher can see who needs extra attention.

**LbQ: Making the most out of every lesson!**

### How does my child login to a school LbQ lesson?

There are two ways, use a web browser to login at [lbq.org/task](http://lbq.org/task) or you can download and install the free LbQ Tasks App from:


Apple iPad | Google Android | Microsoft Windows

Alternatively you can search for 'LbQ Tasks' in your iPad App Store or Android tablet Play Store. There is no advertising or in-app purchasing within the LbQ app.

### How to connect from home

Your child's school uses Learning by Questions (LbQ), which is a great way to learn by answering questions and then instantly receiving helpful feedback after every answer to guide learning and build confidence.

If your child has received a 4-character session code from their school, they will need to use an internet connected device to log in to the activity on the same day. The code will no longer work on the following day and the school will provide new codes for each day.




The teacher can set up to three Question Sets at any time and can see immediately when answers are entered.

### How to switch from one Question Set to another when connected?

Click on the exit door icon on the top corner of the screen, this will take you to a list of one or more tasks that have been set up by the teacher.

### Logging out

If you log out, you can log back in again during the session. Please input exactly the same name each time. Please exit the lesson session after you have finished each day by clicking on the exit door symbol.





## Gosford Greatest

Stepping Stones: Nahi and Natania

Nursery: Hinaz and Sihan

R Swanswell: Jachike and Jeshurun

R Memorial: Khaliid and Khamori

1 Humber: Abigail and Eva

1 Jaguar: Rylan and Suraya

2 Whittle: Advait and Ezmae

2 Cash's: Advika & Asher

3 Westwood: Yasin and Remas

3 Baginton: Tyrell and Aurora

4 Coffantre: Emmanuella & Ethan

4 Sherbourne: Mohammed and Thinuli

5 Phoenix: Richard and Noah

5 Dunlop: Redar and Eleanor

6 Whitefriars: Nikola and Roman

6 Greyfriars: Kroni and Taja



## Dates For Your Diary

### May 2025

Mon	Tue	Wed	Thu	Fri
5 Bank Holiday School Closed	6 Yr4 Swimming Teacher appreciation day Year 6 Residential Meeting	7 Year 4 Trip	8	9 Gosford's Greatest
12 Yr6 SATS week	13 Yr6 SATS week Yr4 Swimming	14 Yr6 SATS week	15 Yr6 SATS week	16 Gosford's Greatest
19	20 Yr4 Swimming	21 World Day for Cultural Diversity	22	23 Gosford's Greatest
26 Half Term Closed	27 Half Term Closed	28 Half Term Closed	29 Half Term Closed	30 Half Term Closed

### June 2025

Mon	Tue	Wed	Thu	Fri
2 School Closed	3 Yr4 Swimming OPAL parent and carer stay and play 2:30 Year 4 Multiplication Check	4 Year 4 Multiplication Check	5 Year 4 Multiplication Check	6 Gosford's Greatest Year 4 Multiplication Check
9 Photographs Year 1 Phonics Screen	10 Yr4 Swimming Year 1 Phonics Screen	11 Year 1 Phonics Screen	12 Year 1 Phonics Screen	13 Gosford's Greatest Year 1 Phonics Screen
16	17	18	19	20 Gosford's Greatest Yr6 Residential
23 Yr6 Residential returns	24	25	26	27 Gosford's Greatest
30	31	1 Transition Day	2	3 Gosford's Greatest

**Training Days 2024-25- School will be closed for children**  
21st July 2025