



## Gosford Park Primary School

One community, many cultures;  
growing and learning together



## Welcome to Gosford Park Primary School

At Gosford Park, we nurture curious, ambitious, and resilient learners who are inspired and supported to reach their full potential. We create a safe, inclusive, and stimulating environment where every child is encouraged to explore the world, approach challenges with resilience, and grow into confident individuals ready to make a positive contribution in their community and beyond.

Our pupils describe our school as:

"Safe, respectful and the best" "Challenging, exciting and cheerful" "Learning, growing, together" "Diverse, colourful and unique" "Multicultural, family, supportive"





## Our Values & Ethos

At Gosford Park Primary School, our values are the heartbeat of our community. We believe in fostering an environment where every child feels a sense of belonging and is empowered to excel.

We focus on three core attributes that prepare our students for a lifelong journey of discovery and success:

- **Curious:** We nurture an inquisitive spirit, encouraging children to explore the world, ask big questions, and seek out new knowledge.
- **Ambitious:** We inspire our pupils to dream boldly, set high expectations for themselves, and reach their full potential.
- **Resilient:** We empower our learners to approach challenges with confidence, view mistakes as opportunities, and persist in the face of adversity.

### Our “**INCLUSIVE**” Promise

Inclusion isn't just a word at Gosford Park; it is our lived experience. We are committed to ensuring that every member of our school family is:

- Inspired to learn
- Nurtured to grow
- Celebrated for their unique talents
- Listened to with respect
- Understood for who they are
- Supported through every step
- Independent in their thinking
- Valued as an individual
- Encouraged to succeed

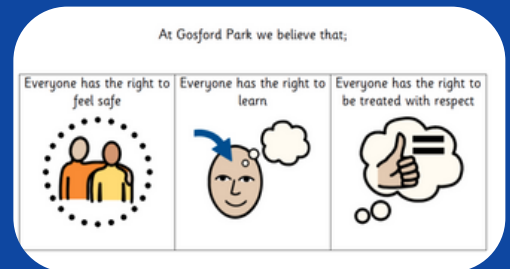




## Our Expectations

In consultation with our pupils, we have developed a set of simple rules, through which our expectations are promoted and reinforced in a consistent manner throughout all aspects of school life. These are on display at all times in a number of areas across the school including every classroom. The rules are:

- I will use the right voice at the right time.
- I will keep my hands, feet and other objects to myself.
- I will follow instructions straight away.



## Our Houses

At our primary school, we proudly divide our students into four houses: **North, East, South, and West**. Each child is assigned to a house when they join the school, and they remain a valued member of that house throughout their time with us.

This house system is designed to foster a strong sense of **belonging, teamwork, and healthy competition**. By being part of a house, children have the opportunity to build friendships across year groups, develop leadership skills, and contribute to a shared identity. It also encourages positive behavior and school spirit through a variety of house-based activities, including sports, academic challenges, and creative events. The names North, East, South, and West symbolize **inclusivity and unity**, reminding us that no matter where we come from, we all belong to one school community working together in every direction.



## Parent Support & Safeguarding at Gosford Park

At Gosford Park we are proud of the support we are able to offer to families and the community. We have a team of dedicated colleagues ensuring that we are able to overcome any barriers to learning.

Gosford Park Primary School fully recognises the contribution it can make to protect children and support pupils in school. We aim to safeguard and promote our pupils' welfare, safety and health by fostering an honest, open, caring and supportive climate. The pupils' welfare is of paramount importance.

- Regular communication and updates
- Parent workshops and meetings
- Opportunities to volunteer and participate in school life

### Safeguarding and Wellbeing

The safety and well-being of pupils are a top priority. Gosford Park Primary School has robust safeguarding policies and procedures in place. Staff are trained to ensure a safe and supportive environment for all children.

### Inclusion and Support

Gosford Park Primary School is committed to inclusion and ensuring that every child receives the support they need. The school provides:

- Special Educational Needs (SEN) support
- English as an Additional Language (EAL) support
- Pastoral care and well-being services
- Differentiated learning opportunities





# EYFS - Nursery & Reception

At Gosford Park Primary School, our Early Years Foundation Stage provides a safe, welcoming space where children learn through play, exploration, and creativity. We focus on building confidence, independence, and a love of learning from the very start. With caring staff and engaging indoor and outdoor environments, every child is supported to thrive and feel excited about coming to school.

Nursery sessions are held daily from 8:45 AM to 11:45 AM, whereas Reception follows the same schedule as the rest of the school, operating from 8:30 AM to 3:15 PM.



# ABC

Learning  
through  
p!ay



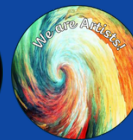
# Our Learning

Gosford Park Primary School offers a broad and balanced curriculum designed to engage and challenge pupils. The curriculum is tailored to meet the needs of all pupils, ensuring that every child is supported and stretched to achieve their best. At Gosford Park, we have developed a curriculum that reflects the unique needs and aspirations of our community. Our goal is to equip every child with the knowledge, skills, and values they need to thrive in the next stage of their education, while fostering a love of learning and a sense of responsibility as members of local, national, and global communities.

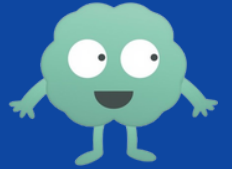
We believe in transparency and collaboration with families. Parents and carers are encouraged to explore our curriculum further by contacting the school for detailed curriculum plans or examples of learning. You can also stay updated with classroom experiences and curriculum highlights through [Class Dojo](#) and our [school blog](#)

## Key Areas of Learning

- English: Developing reading, writing, speaking, and listening skills.
- Mathematics: Building strong numeracy and problem-solving abilities.
- Science: Encouraging curiosity and understanding of the world.
- Computing: Fostering digital literacy and safe online practices.
- Humanities: Exploring history, geography, and cultures.
- Arts: Expressing creativity through music, art, and drama.
- Physical Education: Promoting health, fitness, and teamwork.
- Personal, Social, Health and Economic Education (PSHE): Supporting personal development and well-being.



# My Happy Mind - Mental Wellbeing



Building confident, resilient learners through positive mental wellbeing  
At Gosford Park Primary School, we are proud to be part of the My Happy Mind community—a whole-school approach to mental wellbeing grounded in positive psychology and neuroscience.

This programme helps children:

- Understand how their brains work
- Build self-esteem, resilience, and character
- Develop gratitude, positive relationships, and engagement with the world.

## The Five Units

1. Meet Your Brain – Learning how our brains work and respond
2. Celebrate – Recognising and celebrating our character strengths
3. Appreciate – Developing gratitude as a daily habit
4. Relate – Building strong, positive relationships
5. Engage – Learning how to contribute meaningfully to the world

## Why It Matters

- Promotes emotional literacy and mental health awareness
- Supports pupils in becoming independent, confident, and kind citizens
- Aligns with our school values and British values of respect, tolerance, and liberty.

Weekly sessions are delivered across all year groups, creating a consistent and nurturing environment where every child can thrive emotionally and socially.



SCAN ME



### Contact Information

Gosford Park Primary School  
Humber Avenue  
Coventry  
CV1 2SF  
(Satnav: CV1 2DD)  
Phone: 02476 223281

Email: [enquiries@gosfordpark.coventry.sch.uk](mailto:enquiries@gosfordpark.coventry.sch.uk)

Website: [gosfordpark-coventry.org.uk](http://gosfordpark-coventry.org.uk)

Our school day is 8:30am-3:15pm.

The school office is open from 8:00am – 9:00am & 2:00pm – 3:00pm



Explore our school website for  
information on term dates,  
newsletters, clubs, and so much  
more!

