

**purple
mash**



purple chip



Guide

Contents

Introduction.....	3
Purple Chip: Application	3
Purple Chip: Getting Started	4
Functionality	4
Additional functionality	4
2Code Purple Chip Mode	5
2Code Purple Chip Mode Functionality.....	5
Device Tab: Additional Blocks.....	6
Run Mode	7
Examples of How to Use	7

Need more support? Contact us:

Tel: +44(0)208 203 1781 | Email: support@2simple.com | Twitter: [@2simplesoftware](https://twitter.com/2simplesoftware)



Introduction

The “Purple Chip” app in conjunction with “2Code Purple Chip Mode” is a way of controlling an external physical device and its components from code that is written and run from within Purple Mash.

Purple Chip: Application

The Purple Chip application can be downloaded from the Apple and Google Play app stores.



The Purple Chip application is designed for use on smartphones and tablet devices.

Requires iOS 13.0 or later.

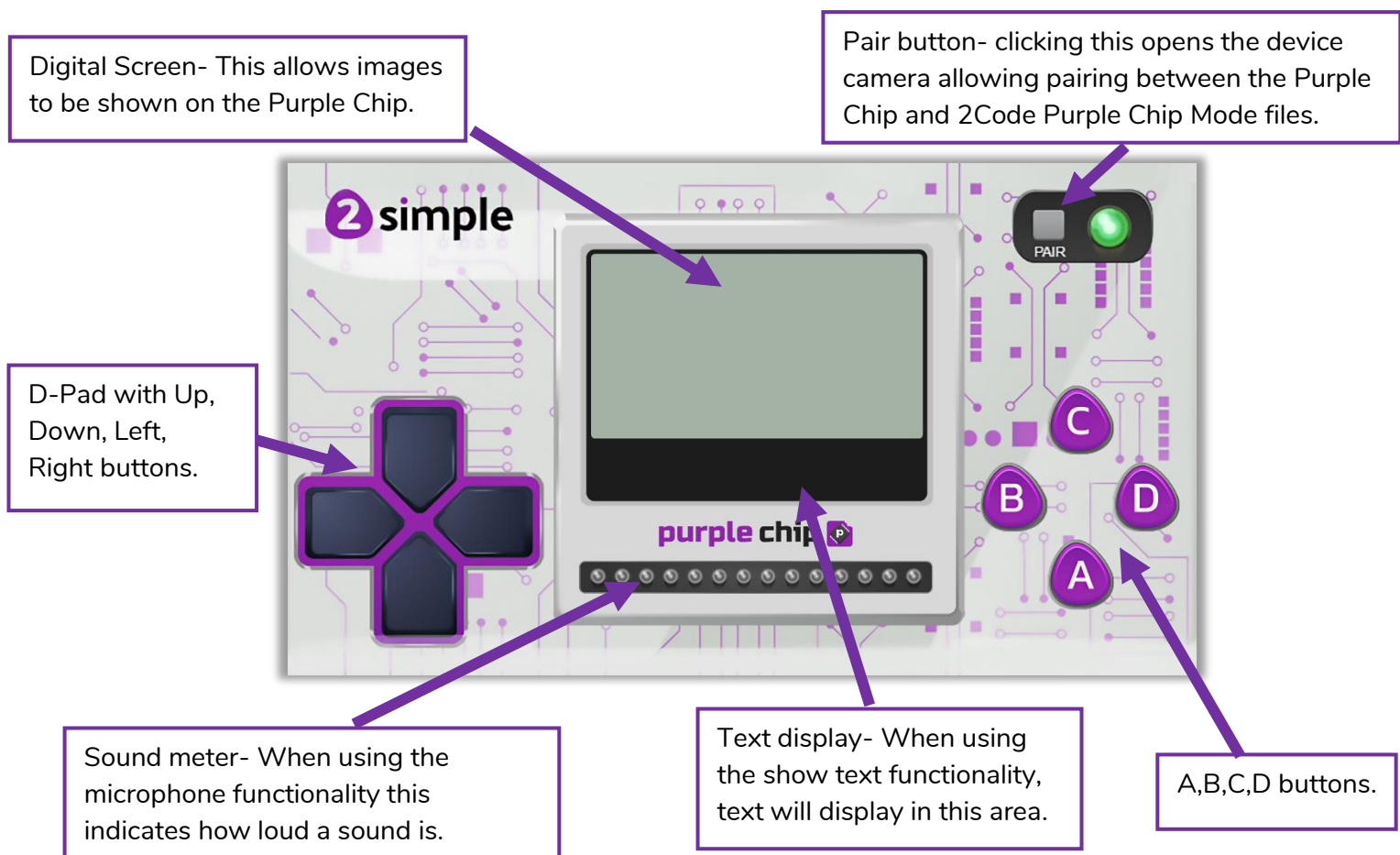
Purple Chip: Getting Started

Once downloaded, click on the Purple Chip tile on your smartphone or tablet device to launch the Purple Chip application.



The Purple Chip application is designed to look like a handheld gamepad.

Functionality



Additional functionality

- When sound detected- this uses the device microphone.
- Device Sound- this uses the device speakers to play sound.
- Device tilt- this uses the device gyroscope and accelerometer to program tilt commands.
- Device shaken- this uses the device gyroscope and accelerometer to program tilt commands.
- Device flash- this uses the device flashlight (Contingent on device).
- Device vibrate- this uses the device vibrate function (Contingent on device).

Need more support? Contact us:

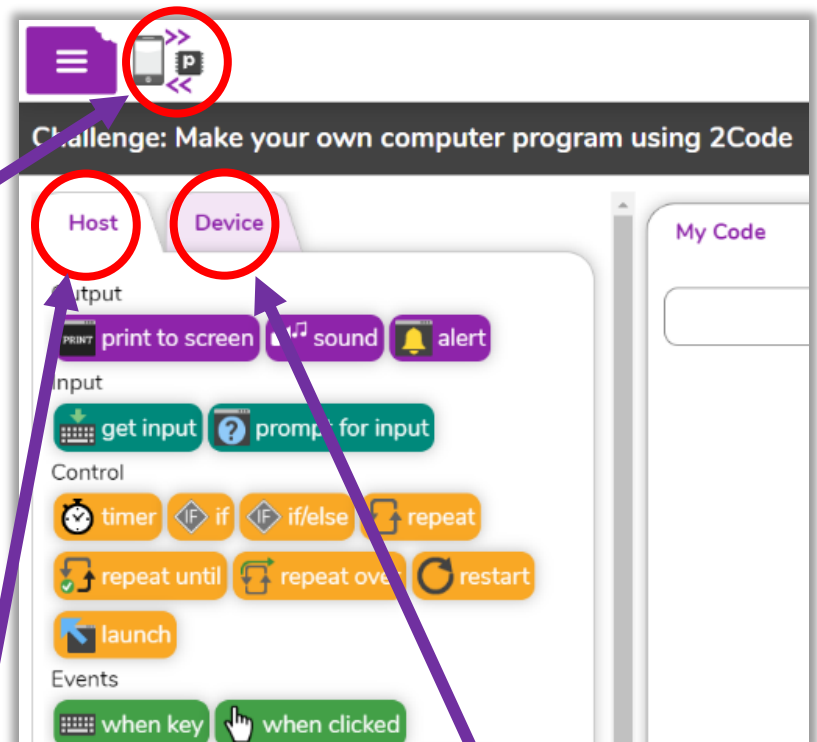
Tel: +44(0)208 203 1781 | Email: support@2simple.com | Twitter: @2simplesoftware

2Code Purple Chip Mode

The 2Code Purple Chip Mode application is a version of 2Code Free code that is set up to allow pairing with the Purple Chip Application. This is where you will write your code which can then be used in conjunction with the Purple Chip Application.

2Code Purple Chip Mode Functionality

2Code Purple Chip Mode has additional functionality from 2Code Free Code.



Pair Button- presents a pair dialogue containing a QR code. By opening your Purple Chip application and pressing the pair button you will be able to pair your Purple Chip application with your 2Code Purple Chip file. There is also an option to launch a simulator if you do not have a device available.



Host tab- This contains the blocks that you would traditionally be able to use in 2Code Free Code.

Device tab- This contains additional blocks relating to the Purple Chip Application. **See next page for information on these blocks.**

Need more support? Contact us:

Tel: +44(0)208 203 1781 | Email: support@2simple.com | Twitter: @2simplesoftware

Device Tab: Additional Blocks

This contains additional blocks relating to the Purple Chip Application.

Flash- Adding this block allows the Purple Chip Application to turn the device flash on/off. This is only possible if the device has a flash e.g. smartphones.

Vibrate- Adding this block allows the Purple Chip Application to turn the device vibrate function on/off. This is only possible if the device has a vibrate function e.g. smartphones.

Chip show text- Adding this block allows you to display text on the Purple Chip text display area.

Chip show image- Adding this block allows you to display an image on the Purple Chip digital screen area.

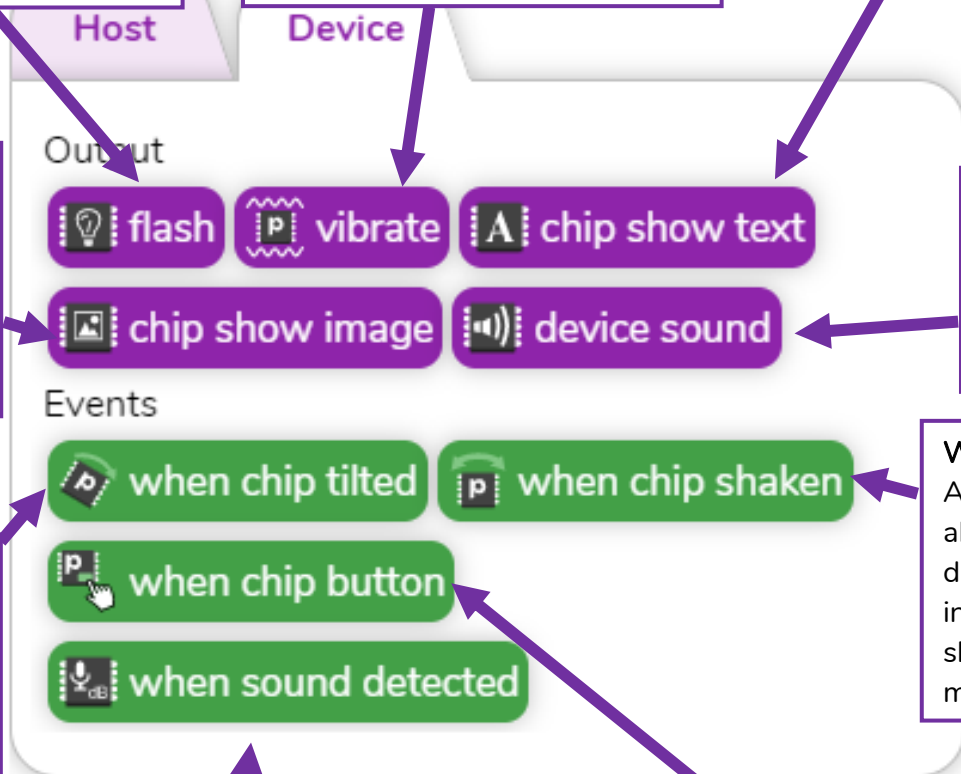
Device sound- Adding this block allows you to play sound through the device speakers.

When chip tilted- Adding this block allows you to use device tilting as an input. E.g. When chip tilted right, `mySprite.right()`;

When chip shaken- Adding this block allows you to use device shake as an input. E.g. When chip shaken, `mySprite.hide()`;

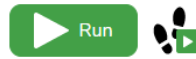
When sound detected- Adding this block allows you to use the Purple Chip Device Microphone as an input. E.g. When medium sound detected `mysprite.hide()`;

When chip button - Adding this block allows you to add commands for buttons included on the Purple Chip interface. Available buttons are Up, Down, Left, Right, A, B, C, D



Run Mode

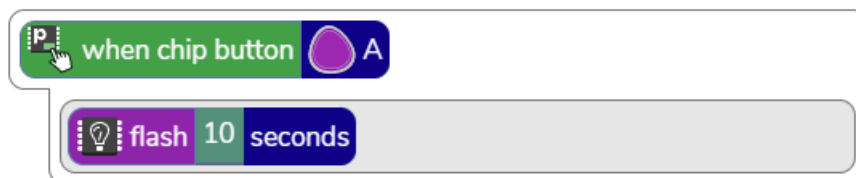
Once you have written your code in 2Code Purple Chip Mode and you have paired your device. You must press "Run" on 2Code Purple Chip Mode. Interacting with the Purple Chip will only work whilst the code is running on 2Code Purple Chip Mode.



Examples of How to Use

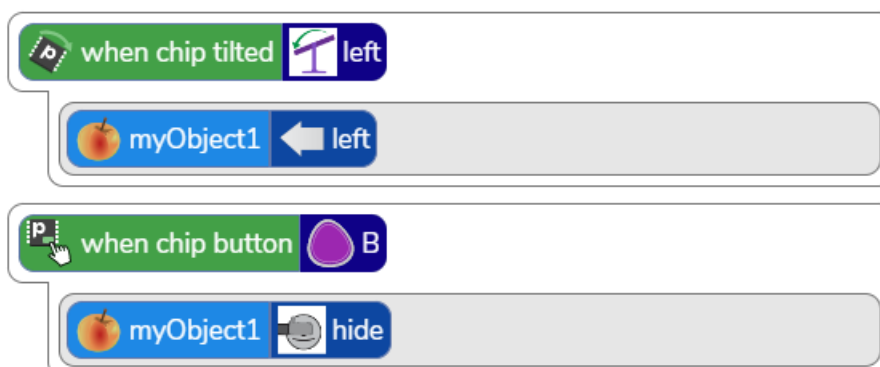
- Write code in 2Code to control the components of your device using the Purple Chip App.

For example- when I press "Button A" turn the device flash on for 10 seconds.



- Write code in 2Code to turn your Purple Chip App into a controller for your game or program.

For example- when I tilt the Purple Chip left move mySprite left or when I press "Button B" hide mySprite.



Need more support? Contact us:

Tel: +44(0)208 203 1781 | Email: support@2simple.com | Twitter: [@2simplesoftware](https://twitter.com/2simplesoftware)